

How to Find Us

By Car:

From Frankfurt Airport (approx. 3 h):

Take the B43 from the airport. Exit onto the A5 in the direction Basel/Darmstadt. Exit onto the A8 in the direction of Stuttgart. At the main Stuttgart junction, exit onto the A81 in the direction of Böblingen/Singen. Take Exit 24 Holzgerlingen.

From Munich (approx. 4 h) or from Stuttgart Airport (approx. 40 min.):

Take A8 in the direction of Karlsruhe. At the main Stuttgart junction, exit onto the A81 in the direction of Böblingen/Singen. Take Exit 24 Holzgerlingen.

From Exit 24 Holzgerlingen:

Follow the B464 and exit at Böblingen Hulb-West/Süd. At the intersection turn right toward Böblingen. At the 2nd traffic light turn left at the sign for AP Sensing. Follow the green signs „Besucher/ Visitor“ and use parking lot B4 (Building 3 entrance).

By Train and S-Bahn:

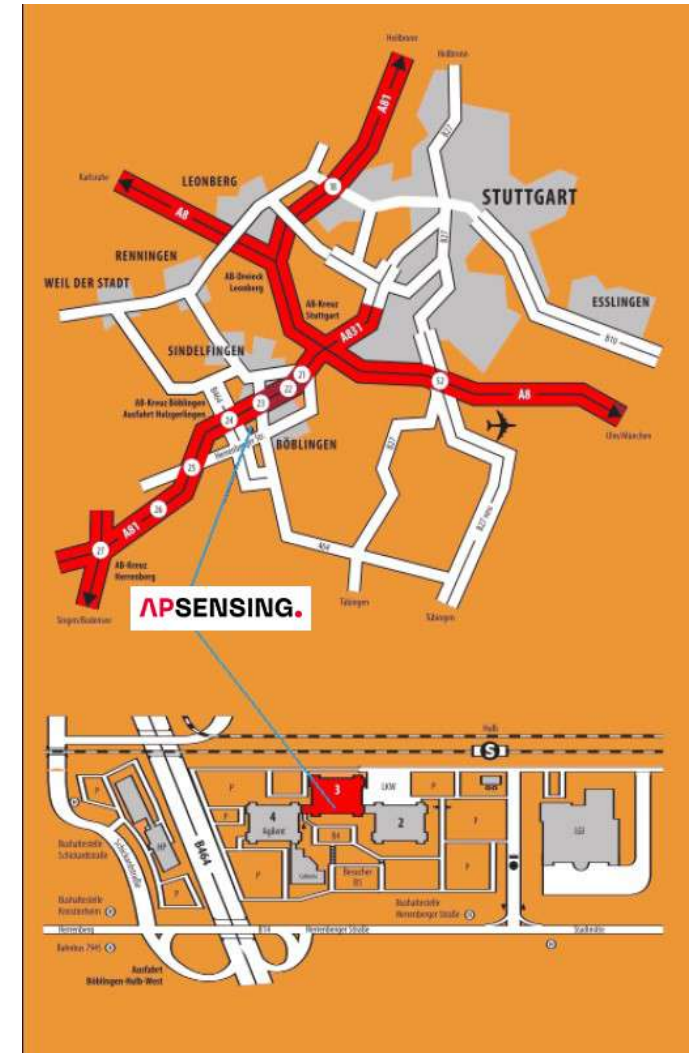
From Frankfurt Airport:

Take the DB train to Stuttgart Main Station. Get off in Stuttgart to change trains. Take the S-Bahn train S1 going to Herrenberg. Get off at Böblingen Hulb, walk 5 minutes to the Building 3 Entrance (see map).

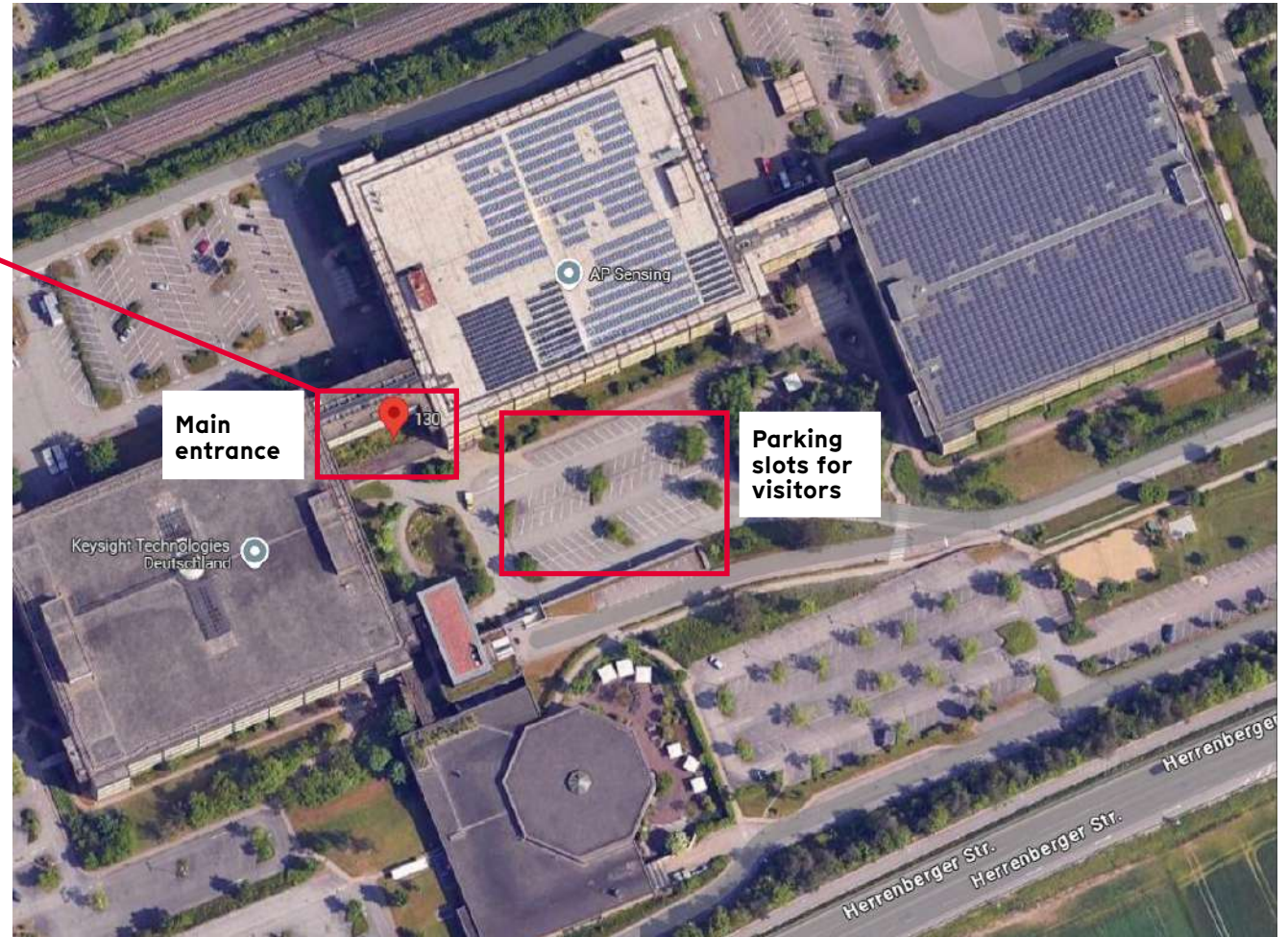
From Stuttgart Airport (approx. 25 min.):

Take the S-Bahn train S2 or S3 going to Stuttgart. Get off in Rohr to change trains. Take the train S1 going to Herrenberg. Get off at Böblingen Hulb, walk 5 minutes to the Building 3 Entrance (see map).

AP Sensing GmbH
Herrenberger Str. 130
71034 Böblingen
Tel: +49 7031 309 66 10
www.apsensing.com



How to Find Us



AP Sensing GmbH
Herrenberger Str. 130
71034 Böblingen
Tel: +49 7031 309 66 10
www.apsensing.com

Hotels in Böblingen

V8 HOTEL Motorworld Region Stuttgart ★★★★★

Charles-Lindbergh-Platz 1
71034 Böblingen
Tel.: +49 703 130 69 88 0
E-mail: info@v8hotel.de
www.v8hotel.de/en/v8-hotel-superior

V8 HOTEL Classic Motorworld Region Stuttgart ★★★★★

Graf-Zeppelin-Platz 1
71034 Böblingen
Tel.: +49 703 130 69 88 0
Email: info@v8hotel.de
www.v8hotel.de/en/v8-hotel-classic

Hotel Boehler ★★★★★

Postplatz 17
71032 Böblingen
Tel.: +49 703 146 040
Email: mail@hotel-boehler.com
www.hotel-boehler.com

Hotel & Restaurant Zum Reussenstein ★★★★★

Kalkofenstr. 20
71032 Böblingen
Tel.: Tel.: +49 703 166 00 0
E-mail: info@reussenstein.com
www.reussenstein.com

Hotel Rieth ★★★★★

Tübinger Str. 157
71032 Böblingen
Tel.: +49 703 172 30
Email: info@hotel-rieth.de
www.hotel-rieth.de

B&B Hotel Böblingen

Konrad-Zuse-Str. 3
71034 Böblingen
Tel.: +49 703 130 93 0
Email: boeblingen@hotelbb.com
www.hotel-bb.com/en/hotel/boeblingen

V Boutique Hotel

Otto-Lilienthal-Str. 32
71034 Böblingen
Tel.: +49 703 146 62 04 6
Email: mail@v-boutique-hotel.de
www.v-boutique-hotel.de

Hotels, Food & Attractions in Böblingen

Motorworld:

Besides 2 restaurants, there is also a big show room where old timer and high class cars are exposed. The entrance is free. Next to the train station Böblingen.

Cafes:

- [FrechDax](#)
- [Bootshaus](#)
- [Seegärtele](#)

Shopping Mall:

[Breuningerland](#)

Restaurants:

- [Schönbuchbräu](#): German
- [Reussenstein](#): German
- [Rainbow Garden](#): Thai
- [Grüner Turm](#): Greek



Hotels in Downtown Stuttgart

Steigenberger Graf Zeppelin ★★★★★

(short walk to main train station)

Arnuf-Klett-Platz 7
70173 Stuttgart
Tel.: +49 711 204 80
Email: stuttgart@steigenberger.de
www.hrewards.com

Le Méridien Hotel ★★★★★

(short walk to main train station)

Willy-Brandt-Straße 30
70173 Stuttgart
Tel.: +49 711 222 10
www.marriott.de

ARCOTEL Camino ★★★★★


(approx. 800 m to main train station)

Heilbronner Straße 21
70191 Stuttgart
Tel.: +49 711 258 58 0
Email: reservation.camino@arcotel.com
www.arcotelhotels.com

EmiLu Design Hotel ★★★★★

(approx. 1,3 km to main train station)

Nadlerstraße 4
70173 Stuttgart
Tel.: +49 711 342 062 0
Email: hello@emilu-hotel.com
www.emilu-hotel.com

Click on map to
be redirected to
Google Maps for
navigations 



To get from the main station to AP Sensing, take the S-Bahn train S1 in the direction of Herrenberg (27 min).

Get off at the station „Böblingen Hulb“ and walk 5 minutes to the Building 3 entrance (see the map).

Other Destinations & Attractions

Destinations:

Esslingen – Old city center of the medieval times. Approx. 20 km away from Stuttgart. Can be also reached by train or S-Bahn (S1 into direction Plochingen or Kirchheim-Teck), which takes about 17 min from Stuttgart main station. The S-Bahn leaves at least every 30 min.

Tübingen – University town with a lovingly restored medieval center of town. Approx. 45 km away from Stuttgart. Can be reached by train, which leaves regularly from Stuttgart main station and takes approx. 1 h. Tables and tickets can be found under www.deutschebahn.com

Heidelberg – City with the most beautiful historical flair. Approx. 120 km from Stuttgart. Can be also reached by train in approx. 1 h from Stuttgart main station. Timetables and tickets can be found under www.deutschebahn.com

Munich – Capital of Bavaria area and one of the most popular German destinations. Approx. 220 km away from Stuttgart. Can be also reached by train, which takes approx. 2 h 15 min. from Stuttgart main station. Timetables and tickets can be found under www.deutschebahn.com

Attractions:

Burg Hohenzollern – Former castle of German princes and princesses. Approx. 70 km away from Stuttgart. Can be reached either by car or by train and bus. Driving directions are explained on the homepage.

Konstanz City and Lake Constance – Lake Constance is the largest lake of Germany and located to the Swiss border approx. 170 km away from Stuttgart. By train it can be reached in approx. 2 h 30 min. - 3 h. Timetables and tickets can be found under www.deutschebahn.com

Neuschwanstein Castle – Most visited and most beautiful castle in Germany. Approx. 230 km away from Stuttgart.

Shopping:

Outlet Shopping City Metzingen can be reached by train (approx. 1 h from Stuttgart main station) or by a shopping shuttle. More information can be found on the homepage.

